

INSTALLATION INSTRUCTIONS

RMXA HANGER - PRE-COMPRESSED

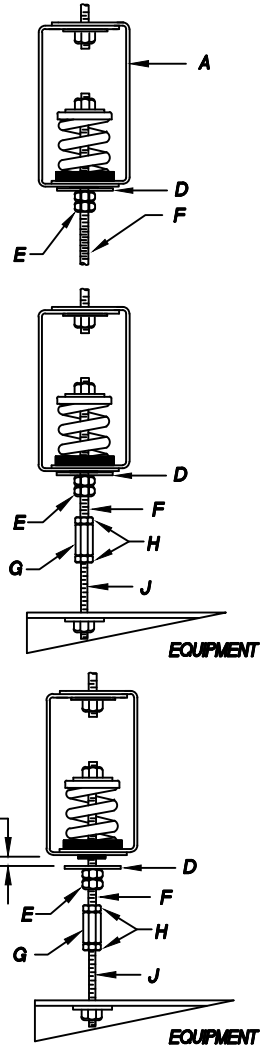
1. ANCHOR HANGER BOX (A) TO STRUCTURE WITH CONTRACTOR-SUPPLIED ANCHOR BOLT/SCREW AND HARDWARE AS SPECIFIED IN CONTRACT DRAWINGS.

2. HANGER IS SHIPPED FULLY ASSEMBLED WITH THE SPRING PRE-COMPRESSED TO THE RATED LOAD AND SPECIFIED DEFLECTION BY MEANS OF A COMPRESSION PLATE (D) AND LOCK NUT (E) UNDER THE HANGER BOX. THE HANGER THUS ACTS AS A RIGID CONNECTION DURING INSTALLATION, AVOIDING THE CHANGES IN ELEVATION WHICH TYPICALLY OCCUR WITH STANDARD HANGERS.

3. USING CONTRACTOR-SUPPLIED ROD COUPLING (G) AND NUTS (H), ATTACH HANGER'S ROD (F) TO A LENGTH OF CONTRACTOR-SUPPLIED ROD (J) SUFFICIENT TO SPAN FROM HANGER LOCATION TO EQUIPMENT.

SECURE LOWER END OF THREADED ROD (J) TO EQUIPMENT BEING SUPPORTED. TAKE CARE THAT THREADED ROD REMAINS CENTERED IN BOTTOM HOLE OF HANGER BOX.

4. ONCE ALL HANGERS ARE SECURED TO A UNIT OR TO AN ENTIRE PIPE RUN, BACK OFF LOCK NUT (E) AND COMPRESSION PLATE (D) TO RELEASE SPRING TO ACT FREELY. RE-POSITION PLATE (D) 1/4" BELOW HANGER BOX AND SECURE WITH LOCK NUT (E). PLATE (D) MAY NOW SERVE AS A VERTICAL LIMIT STOP, IF REQUIRED FOR USE WITH SEISMIC CABLE BRACING.



<i>JOB NAME:</i>	<i>SERIES NO.:</i>		
<i>CUST.:</i>	M.W. SAUSSÉ & CO., INC. VALENCIA, CALIFORNIA 91355		
<i>CUST. P.O.:</i>			
<i>MECH. ENGR.:</i>	<i>VIBREX TYPE</i> RMXA-PC		
<i>CONTR.:</i>	<i>DRN.:</i>	<i>CHCK.:</i>	<i>SCALE:</i>
<i>MARK:</i>	<i>DATE:</i>	<i>NO.:</i>	