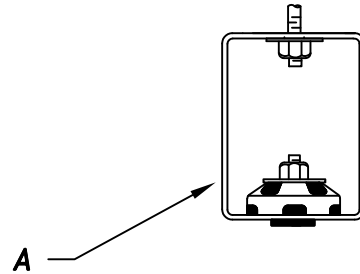
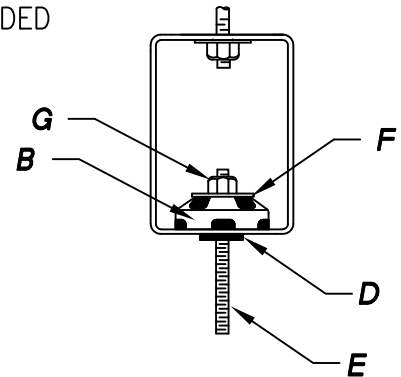


# HSS HANGER INSTALLATION INSTRUCTIONS

1. ANCHOR HANGER BOX (A) TO STRUCTURE WITH CONTRACTOR-SUPPLIED ANCHOR BOLT/SCREW AND HARDWARE AS SPECIFIED IN CONTRACT DRAWINGS.



2. ASSEMBLE NEOPRENE GROMMET (B) INTO HANGER BOX (A). MAKE SURE GROMMET IS PROPERLY SEATED IN BOX BOTTOM HOLE (D). EXTEND CONTRACTOR-SUPPLIED THREADED ROD (E) THRU THE ASSEMBLY. SECURE THREADED ROD WITH WASHER (F) AND NUT (G).



3. SECURE LOWER END OF THREADED ROD (E) TO UNIT BEING SUPPORTED. TAKE CARE THAT THREADED ROD IS CENTERED IN THE HANGER BOX BOTTOM HOLE.

4. IF LEVELING IS REQUIRED, ADJUSTMENTS CAN BE MADE BY TURNING NUT (G).

