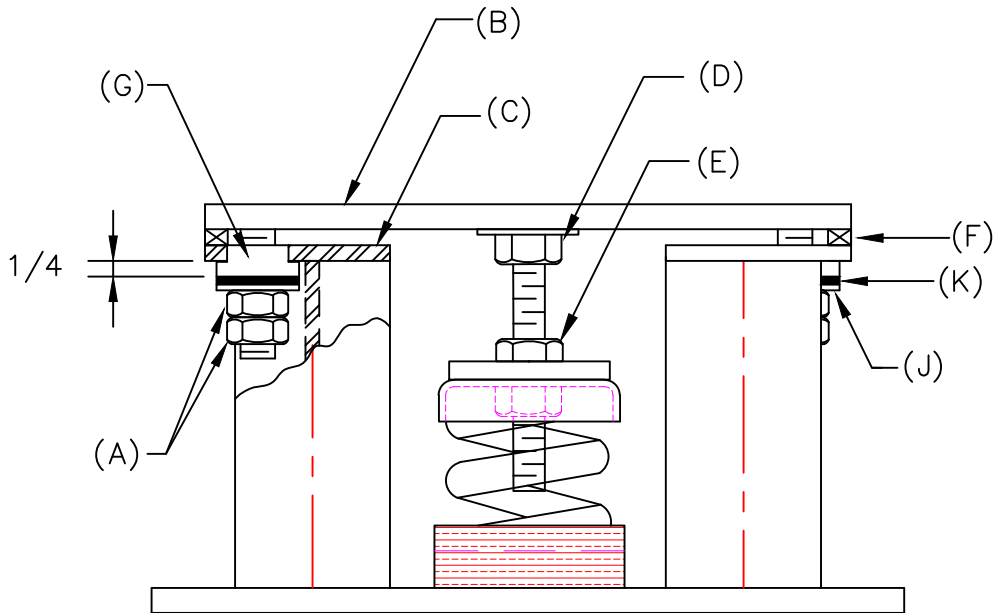


# VIBREX TYPE RMLS-EQ INSTALLATION INSTRUCTIONS



1. LOOSEN NUTS (A) TO ALLOW PLATE (B) TO MOVE UP FREELY.
2. BACK NUT (E) OFF OF SPRING PLATE TO ALLOW SPRING DEFLECTION.
3. DEFLECT SPRING BY TURNING LEVELING BOLT (D) COUNTER-CLOCKWISE DEFLECT SPRING 1/4" AT A TIME AND THEN MOVE ON TO THE NEXT MOUNT. REPEAT THIS PROCEDURE FOR EACH MOUNT UNTIL SHIMS (F) CAN BE REMOVED BY HAND. (CONTINUOUS DEFLECTION OF ONE SPRING MAY RESULT IN IMPROPER INSTALLATION).
4. SECURE JAM NUT (E) AGAINST TOP PLATE OF THE SPRING.
5. REMOVE NUTS (A), STEEL WASHERS (J) AND RUBBER WASHERS (K). SAVE TO RE-INSTALL.
6. REMOVE AND DISCARD WOOD CENTERING BLOCKS (G).
7. RE-INSTALL RUBBER WASHERS (K) STEEL WASHERS (J) AND NUTS (A).
8. ADJUST NUTS (A) UNTIL THERE IS 1/4" CLEARANCE BETWEEN THE RUBBER WASHERS (K) AND PLATES (C).
9. LOCK JAM NUTS (A) TOGETHER.