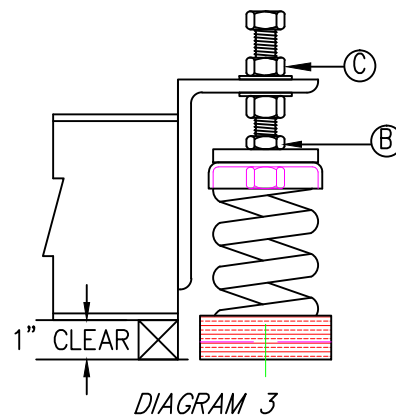
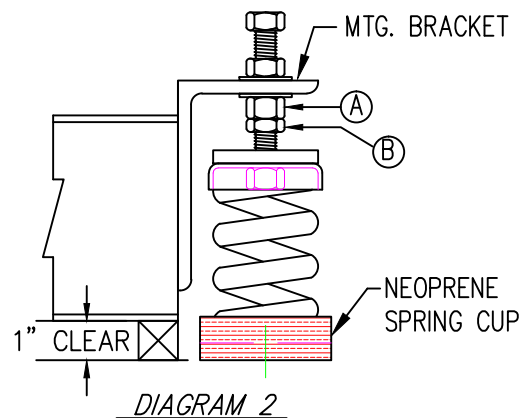
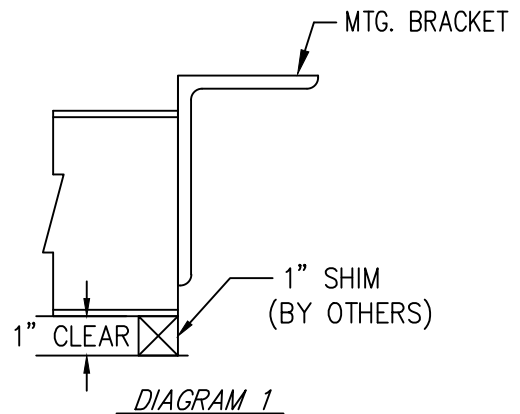


INSTALLATION INSTRUCTIONS

PHONE NO. (661) 257-3311

FAX NO. (661) 257-7673

1. LOCATE SHIMS UNDER THE BRACKETS.
(DIAGRAM 1)
2. POSITION UNIT ON THE BASE USING MARKINGS
ON THE STEEL BASE TO ORIENT THE UNIT
3. LOCATE SPRINGS MOUNTS UNDER BRACKETS WITH
LEVELING BOLTS IN PLACE AS SHOWN IN DIAGRAM 2.
BE SURE THAT NUTS (A) AND (B) ARE LOCKED
TIGHTLY TOGETHER .
4. DEFLECT SPRING BY TURNING LEVELING BOLT COUNTER
CLOCKWISE. ONLY DEFLECT SPRINGS 1/4" AT A TIME AND
THEN MOVE ON TO NEXT MOUNT. REPEAT THIS PROCEDURE
FOR EACH MOUNT UNTIL SHIMS CAN BE REMOVED BY HAND.
(CONTINUOUS DEFLECTION OF ONE SPRING MAY RESULT IN
IMPROPER INSTALLATION.
5. SECURE JAM NUT (B) AGAINST SPRINGS TOP PLATE AND
JAM NUT (C) AGAINST TOP OF BRACKET. (DIAGRAM 3)
6. SECURE ISOLATOR TO SUPPORTING STRUCTURE
WITH 5/8" DIA. LAG BOLT. (OPTIONAL)
7. AFTER SPRINGS ARE ADJUSTED, INSERT RESTRAINTS
IN PLACE. DO NOT BOLT DOWN THE RESTRAINTS UNTIL
THE NEXT STEPS ARE COMPLETE.
8. PROVIDE CLEARANCES BETWEEN BASE AND RESTRAINTS
AS SHOWN ON DRAWING _____ THE PIPE NIPPLE
(FOR 3500 TYPE RESTRAINTS) OR THREADED ROD
(FOR 3200 TYPE RESTRAINTS) SHOULD BE CENTERED
AND NOT TOUCHING ANY SIDE OF THE RESTRAINT.
9. IF ADJUSTMENT IS REQUIRED, MOVE RESTRAINTS OR
ADJUST SPRINGS FURTHER UNTIL PIPE NIPPLES
OR THREADED RODS ARE CENTERED.
10. WHEN ADJUSTMENT IS COMPLETE, ANCHOR RESTRAINTS
AS SPECIFIED IN RESTRAINT DRAWING _____.



RMS - STANDARD



M.W. SAUSSE' & COMPANY, INC.
28744 WITHERSPOON PARKWAY
VALENCIA, CALIFORNIA 91355-5425

PHONE: 661-257-3311
FAX: 661-257-6048