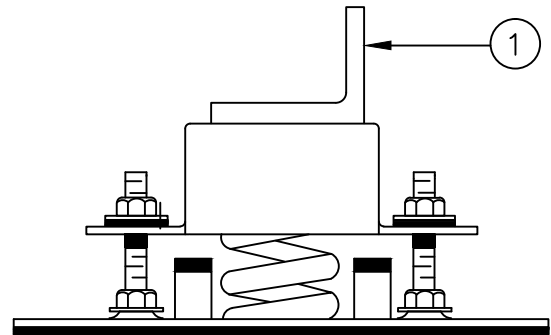
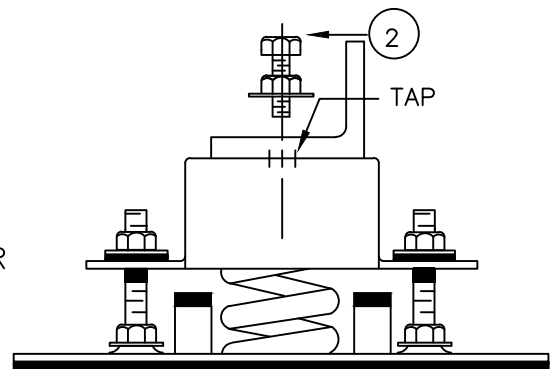


## VIBREX TYPE RMU-EQ-SH INSTALLATION INSTRUCTIONS

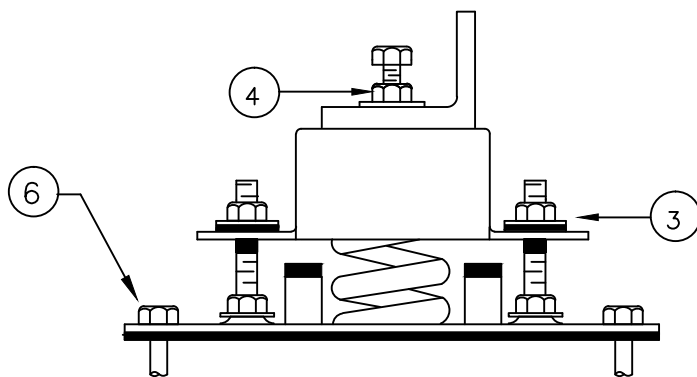
- A) ISOLATORS ARE SHIPPED ASSEMBLED AND READY TO INSTALL.
- B) POSITION ISOLATORS UNDER UNIT MOUNTING LEGS (1) AT THEIR PROPER LOCATION. (VIEW A)
- C) ATTACH UNIT TO ISOLATORS WITH LEVELING BOLT (2) (VIEW B)
- D) IF LEVELING IS REQUIRED, LOOSEN NUTS (3) AND (4). TURN LEVELING BOLT (5) CLOCKWISE TO RAISE UNIT. (VIEW C)
- E) AFTER UNIT IS LEVEL, TIGHTEN NUT (4). NUTS (3) SHOULD ONLY BE FINGER TIGHT. (VIEW D)
- F) THE ISOLATOR SHOULD BE ANCHORED TO THE STRUCTURE WITH THE REQUIRED TYPE ANCHOR BOLTS (6) (BY OTHERS) ONLY AFTER ALL ISOLATORS ARE OPERATING PROPERLY! (VIEW D)



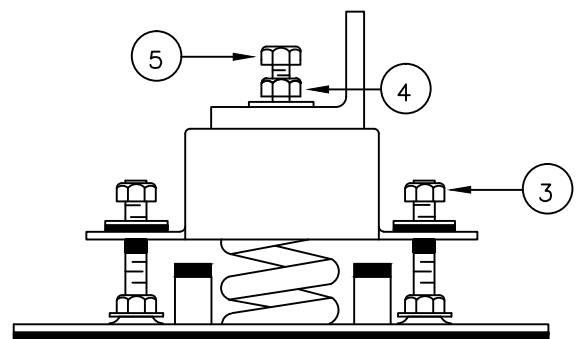
VIEW A



VIEW B



VIEW D



VIEW C