

VIBREX TYPE VIC-EQ INSTALLATION INSTRUCTIONS

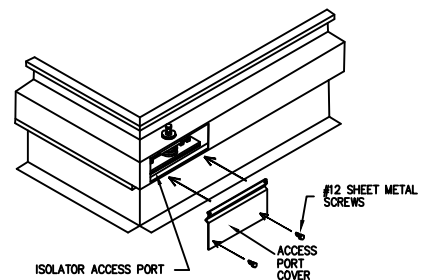
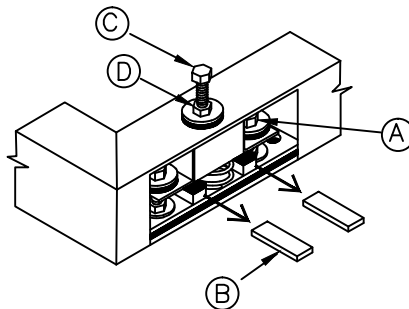
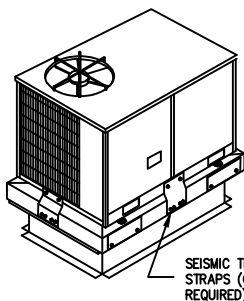
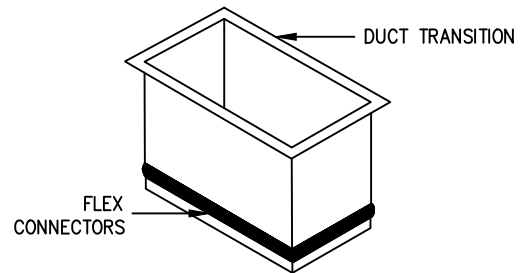
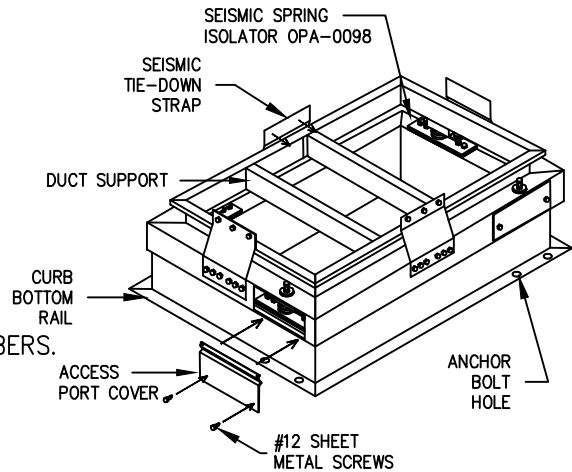
1. LOCATE CURB ASSEMBLY IN PLACE ON SUPPORTING STRUCTURE. (SEE MANUFACTURER'S SPEC'S FOR RECOMMENDED CLEARANCES).
2. ANCHOR CURB ASSEMBLY TO THE STRUCTURE. REFER TO M.W. SAUSSE' SUBMITTAL DRAWINGS FOR MINIMUM ANCHORAGE REQUIREMENTS.
3. POSITION DUCT TRANSITION(S) AND FLEX.
4. IF CURB HAS INSULATED PANELS, MAKE SURE THEY ARE IN PLACE. APPLY GASKET/FOAM TAPE MATERIAL AT PERIMETER, CROSS MEMBERS, & ALL DUCT SUPPORT MEMBERS.

NOTE: A WOOD NAILER STRIP IS SUPPLIED FOR THE ATTACHMENT OF ROOFING MATERIAL. ONCE THE CURB HAS BEEN ANCHORED, THE ROOFING CAN BE COMPLETED.

5. SET THE UNIT IN PLACE ON TOP OF THE CURB. BE SURE THAT UNIT ORIENTATION IS THE SAME AS THE MARKINGS ON THE CURB.
6. ATTACH SEISMIC TIE-DOWNS TO UNIT W/ SELF TAPPING SCREWS AS SHOWN IN M.W. SAUSSE' SUBMITTALS. FORM THE TIE DOWN STRAPS TO THE SHAPE REQUIRED TO ALLOW ATTACHMENT TO VIC-EQ TOP RAILS. ATTACH TIE-DOWNS TO TOP RAILS WITH SPECIFIED SELF TAPPING SCREWS.

7. REMOVE ISOLATOR ACCESS PORT COVERS (SEE SKETCH AT BOTTOM OF PAGE). TO LEVEL THE UNIT, REMOVE NUTS (A) FROM ISOLATOR BOLTS. LOOSEN JAM NUTS (D) ON THE LEVELING BOLT. ADJUST THE EXPOSED ISOLATOR LEVELING BOLTS (C) TO LOAD THE SPRINGS BY TURNING THE BOLT CLOCKWISE 4 TURNS PER ISOLATOR. REPEAT THE PROCESS ISOLATOR BY ISOLATOR UNTIL SHIPPING SHIMS (B) CAN BE REMOVED BY HAND. AS SOON AS THE SHIPPING SHIMS (B) CAN BE REMOVED BY HAND, THAT PARTICULAR ISOLATOR NEEDS NO FURTHER ADJUSTMENT. CONTINUE MOVING FROM ISOLATOR TO ISOLATOR, ADJUSTING NO MORE THAN 4 TURNS AT THE TIME UNTIL ALL SHIPPING SHIMS (B) CAN BE REMOVED BY HAND. TIGHTEN JAM NUTS (D). REPLACE NUTS (A) AND ADJUST THEM TO APPROXIMATELY 1/16" CLEARANCE ABOVE WASHERS.

8. RE-ATTACH THE ISOLATOR ACCESS PORT COVERS WITH PROVIDED SHEET METAL SCREWS. ENSURE THAT THE COVERS ARE POSITIONED TO PROVIDE A WEATHERTIGHT SEAL FOR THE CURB. CAULK ANY GAPS.



M.W. SAUSSE' & COMPANY, INC.
28744 WITHERSPOON PARKWAY
VALENCIA, CALIFORNIA 91355-5425

PHONE: 661-257-3311
FAX: 661-257-6048